



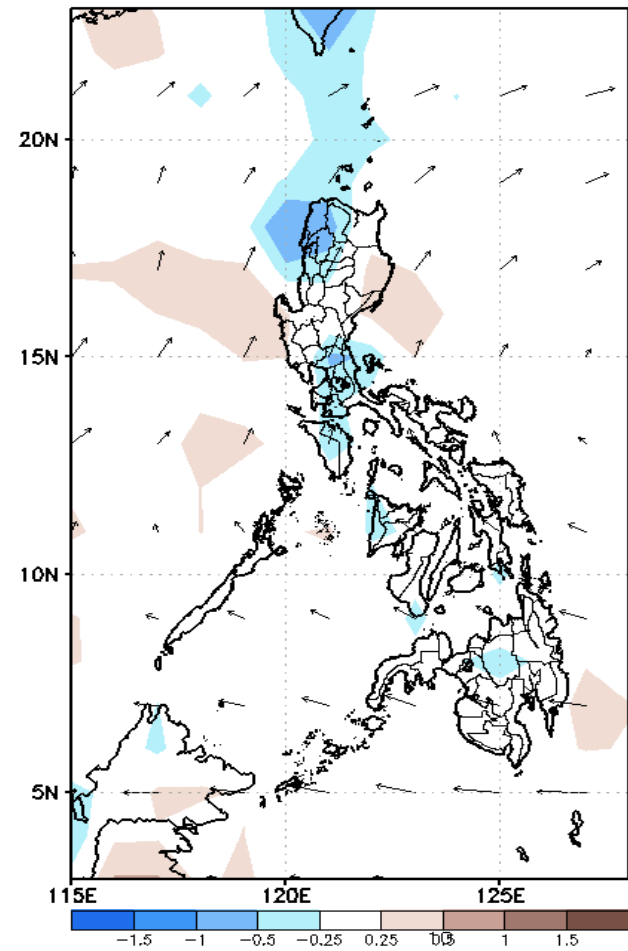
# Week 1 & Week 2 Forecast for the Philippines using GEFS Model



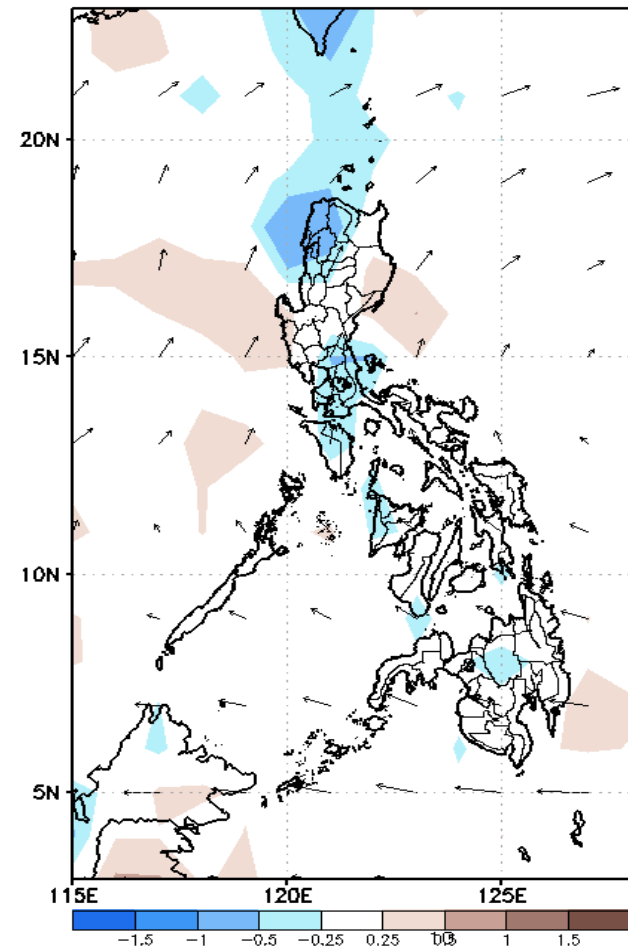
# GEFS Week-1 Forecasts: Divergence & Wind Anomaly

Week 1: Nov 12-18, 2020

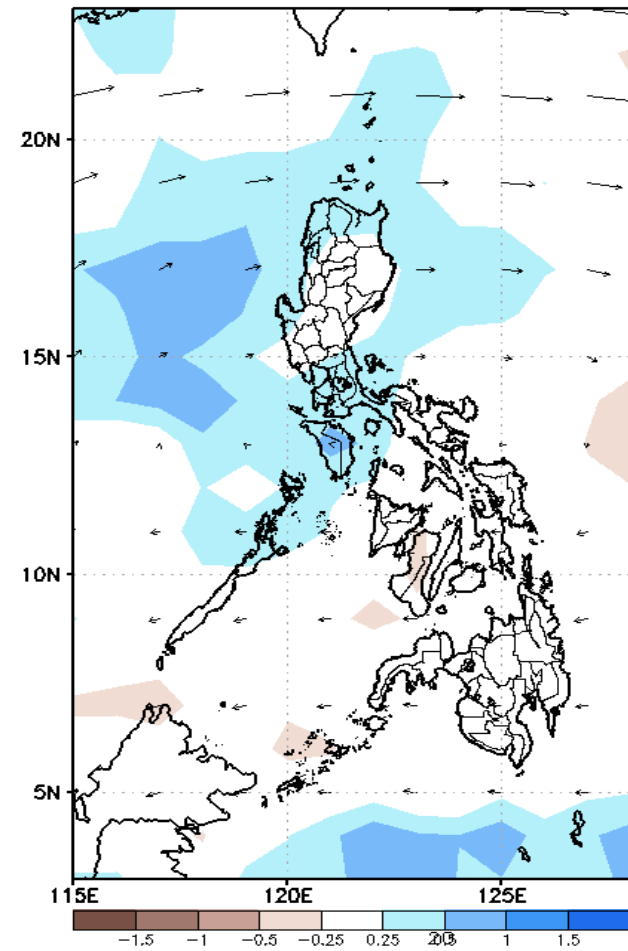
GEFS Week-1 850-hPa Divergence and Wind Anom  
Valid: 20201112 - 20201118



GEFS Week-1 700-hPa Divergence and Wind Anom  
Valid: 20201112 - 20201118



GEFS Week-1 200-hPa Divergence and Wind Anom  
Valid: 20201112 - 20201118



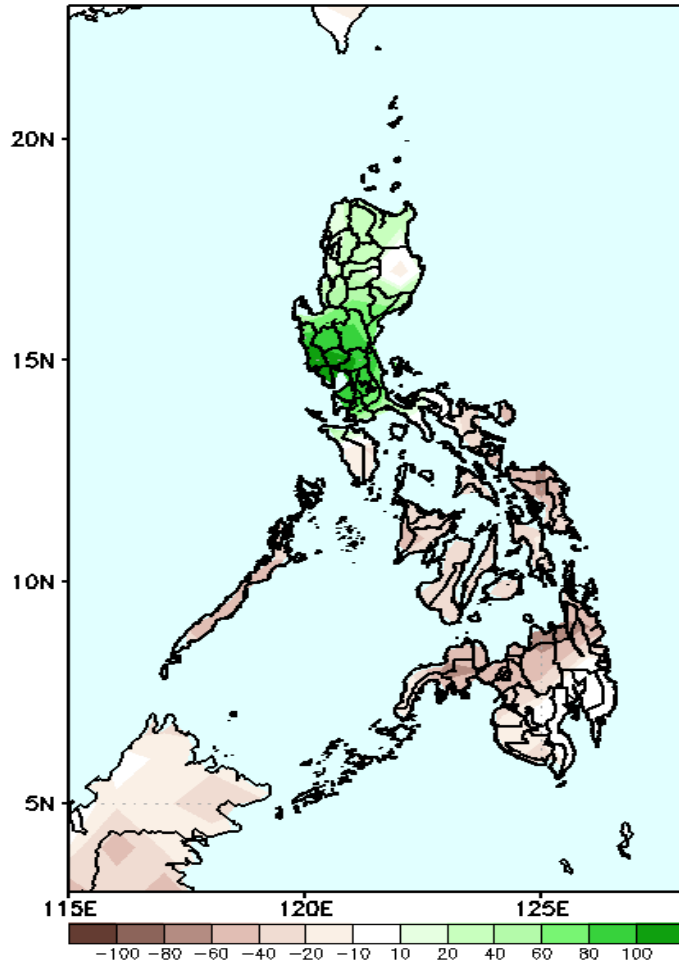
Upper level (200hPa) Divergence suggest likelihood of precipitation in parts of Luzon. Northeast Monsoon affecting extreme northern while easterlies affecting most parts of the country during the forecast period.



# Precipitation Anomaly and Exceedance Probability > 25/50 mm

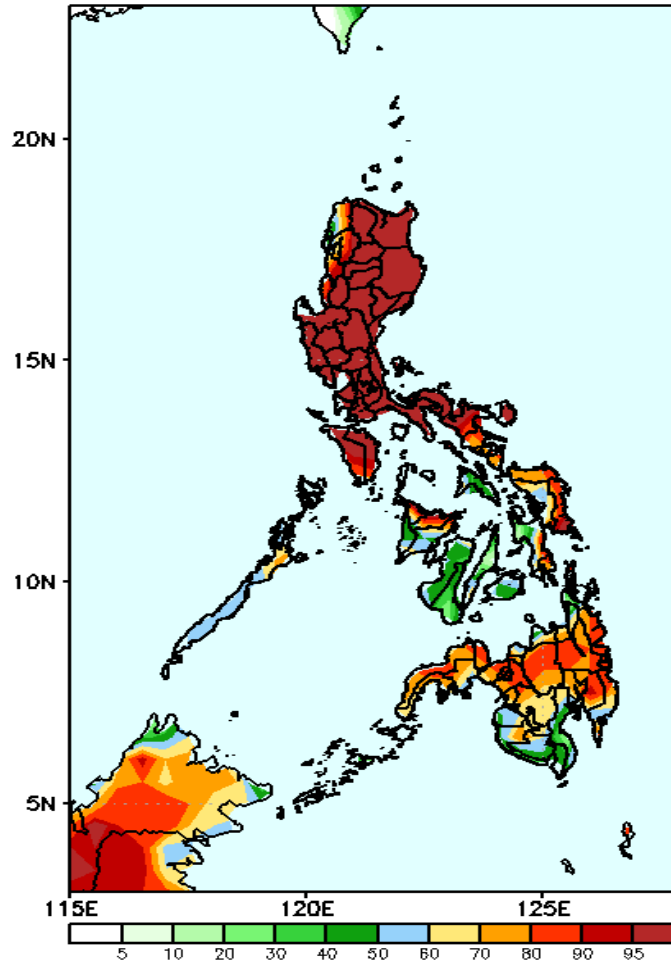
**Week 1: Nov 12-18, 2020**

GEFS Week-1 Precip Anomaly  
Valid: 20201112 - 20201118



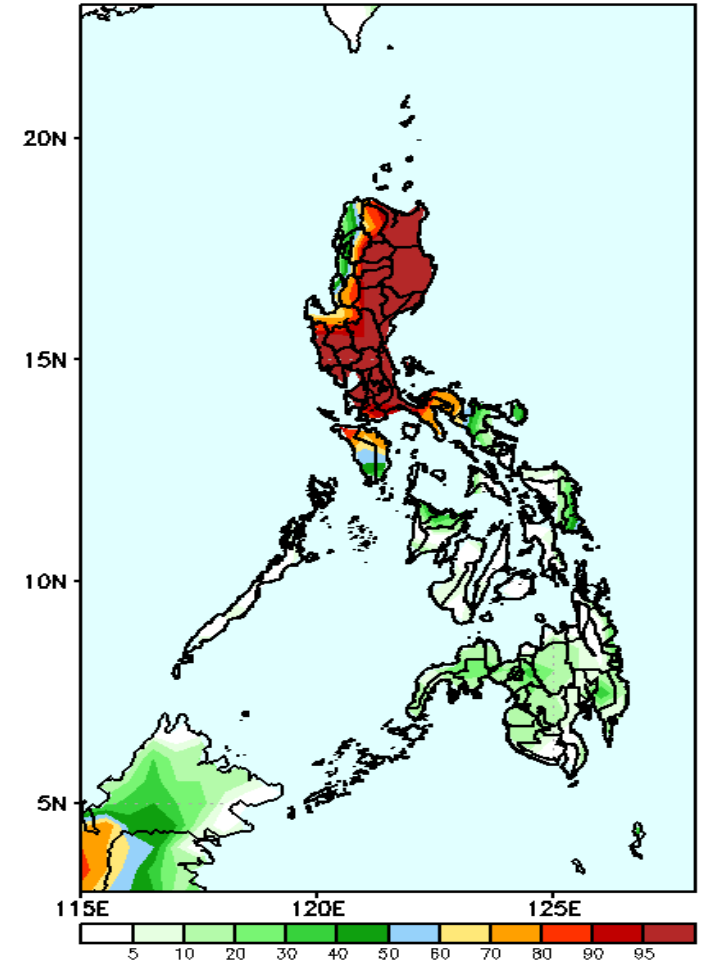
Increase of rainfall of up to 100mm in most parts of Luzon is expected while rainfall deficit of up to 80mm in Visayas and Mindanao during the forecast period.

GEFS Week-1 Exceedance Prob. > 25mm  
Valid: 20201112 - 20201118



High probability of rainfall to exceed 25mm in most parts of the country is expected except in western Visayas, Sarangani and Davao Occidental during the forecast period.

GEFS Week-1 Exceedance Prob. > 50mm  
Valid: 20201112 - 20201118



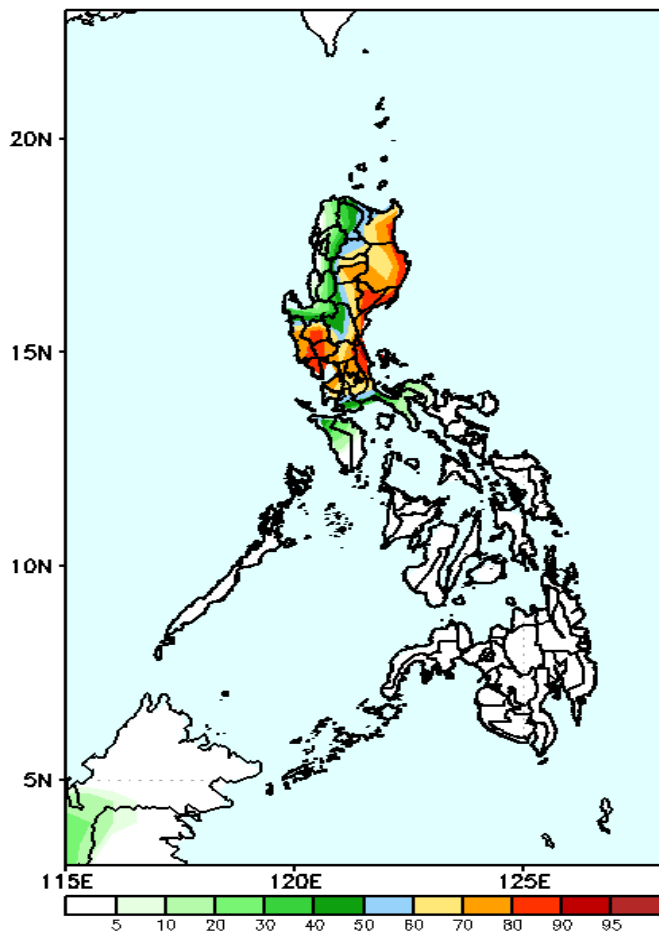
High probability of rainfall to exceed 50mm in most parts of Luzon while Visayas and Mindanao are less likely.



# Exceedance Probability > 100/150/200 mm

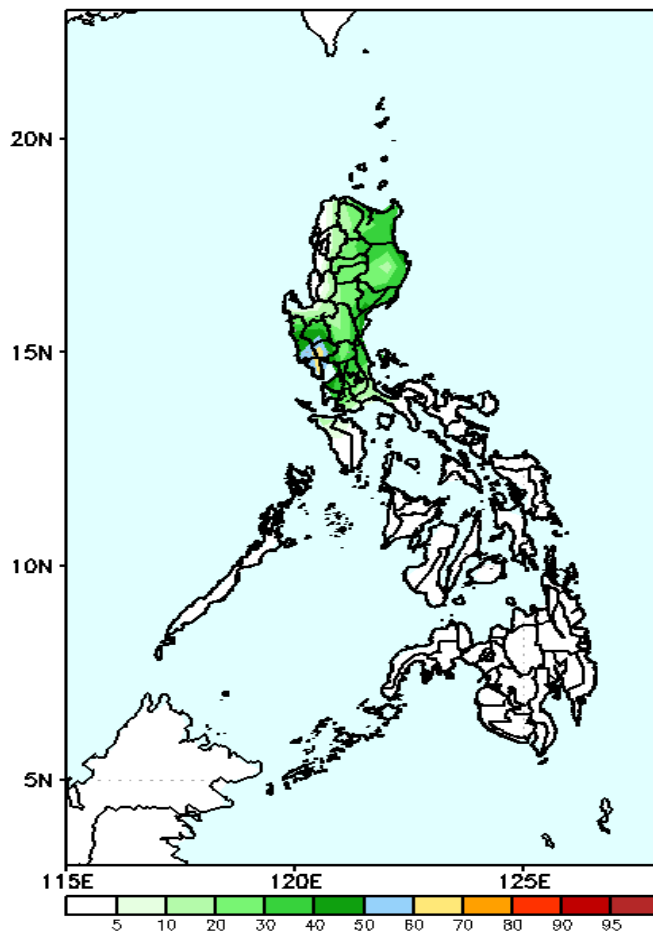
Week 1: Nov 12-18, 2020

GEFS Week-1 Exceedance Prob. > 100mm  
Valid: 20201112 - 20201118



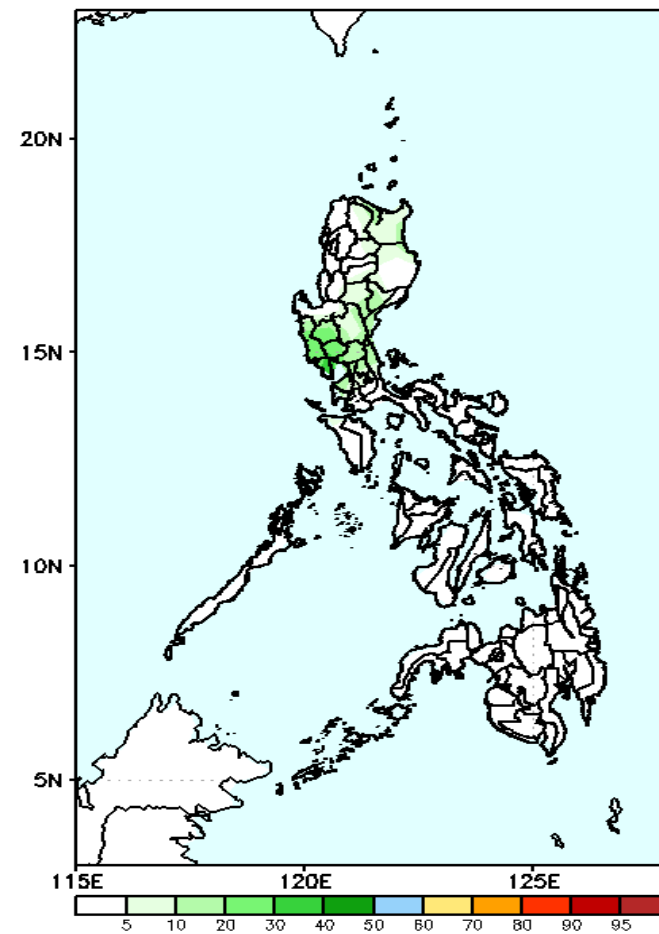
High probability of rainfall to exceed 100mm in Mt. Province, Ifugao, Cagayan Valley, most parts of central and southern Luzon while less likely for the rest of the country during the forecast period.

GEFS Week-1 Exceedance Prob. > 150mm  
Valid: 20201112 - 20201118



Less probability of rainfall to exceed 150mm in most parts of the country during the forecast period.

GEFS Week-1 Exceedance Prob. > 200mm  
Valid: 20201112 - 20201118



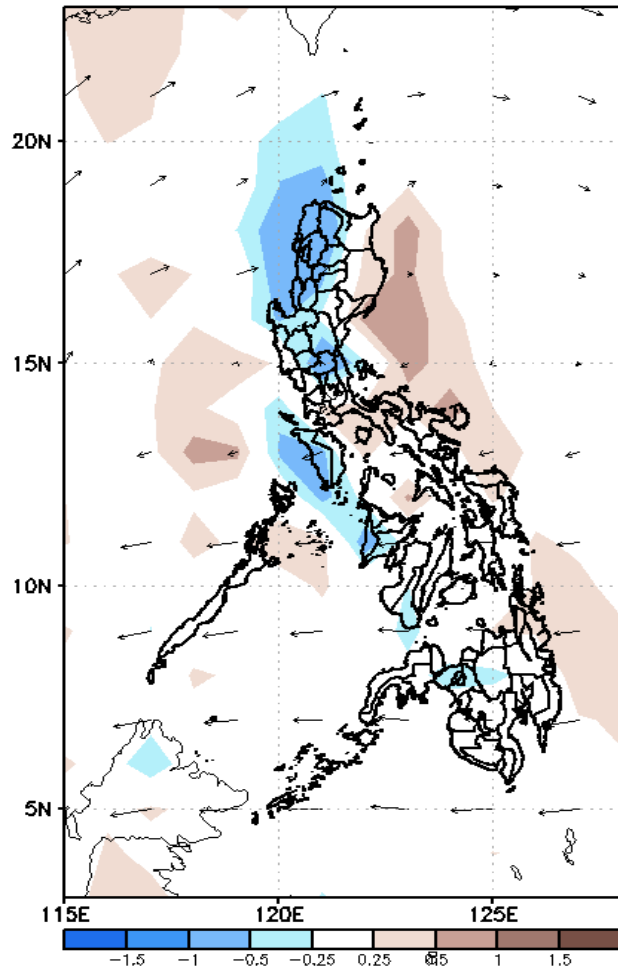
Less probability of rainfall to exceed 200mm in most parts of the country during the forecast period.



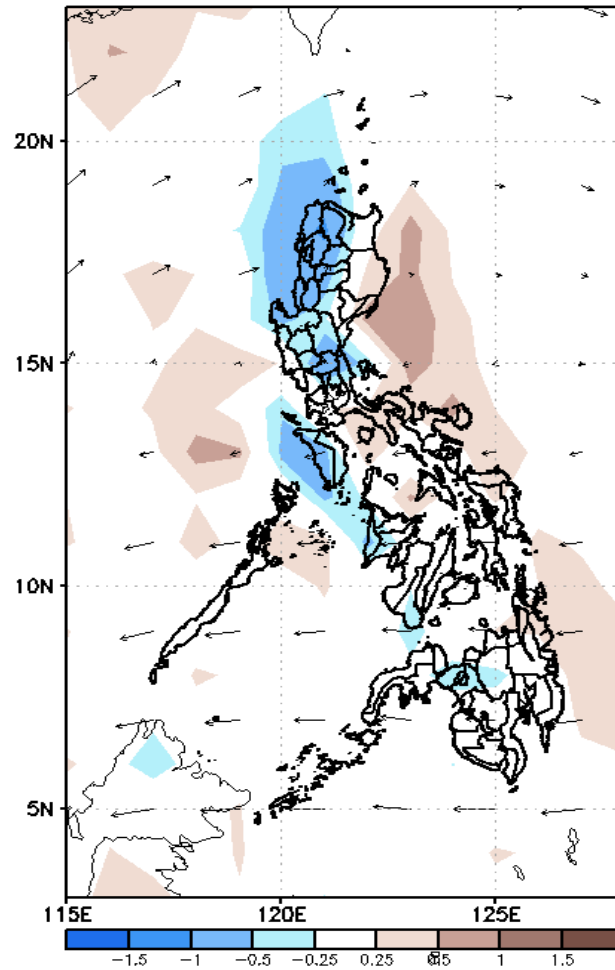
# GEFS Week-2 Forecasts: Divergence & Wind Anomaly

Week 2: Nov 19-25, 2020

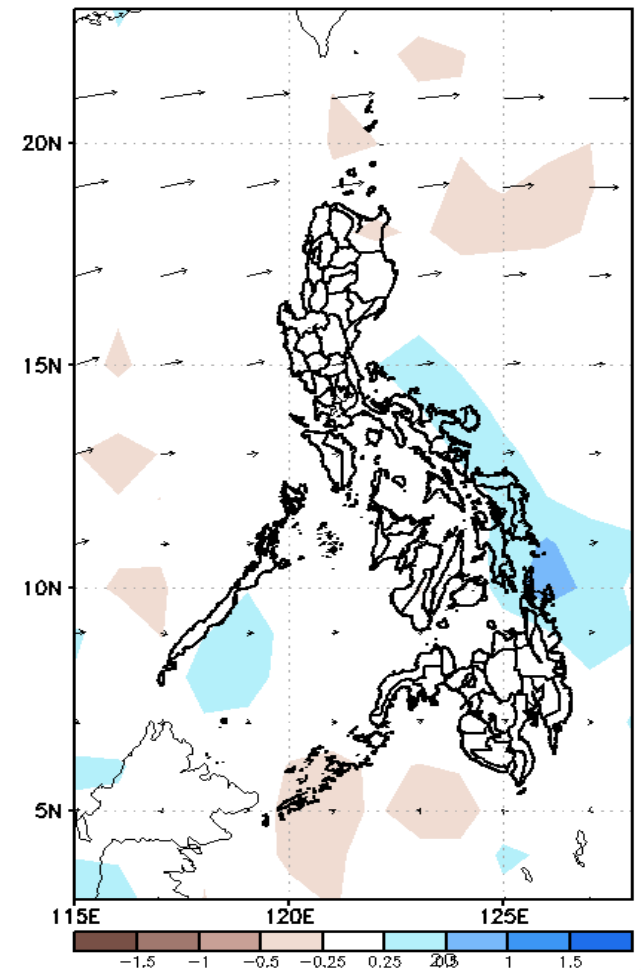
GEFS Week-2 850-hPa Divergence and Wind Anomaly  
Valid: 20201119 - 20201125



GEFS Week-2 700-hPa Divergence and Wind Anomaly  
Valid: 20201119 - 20201125



GEFS week-2 200-hPa Divergence and Wind Anomaly  
Valid: 20201119 - 20201125



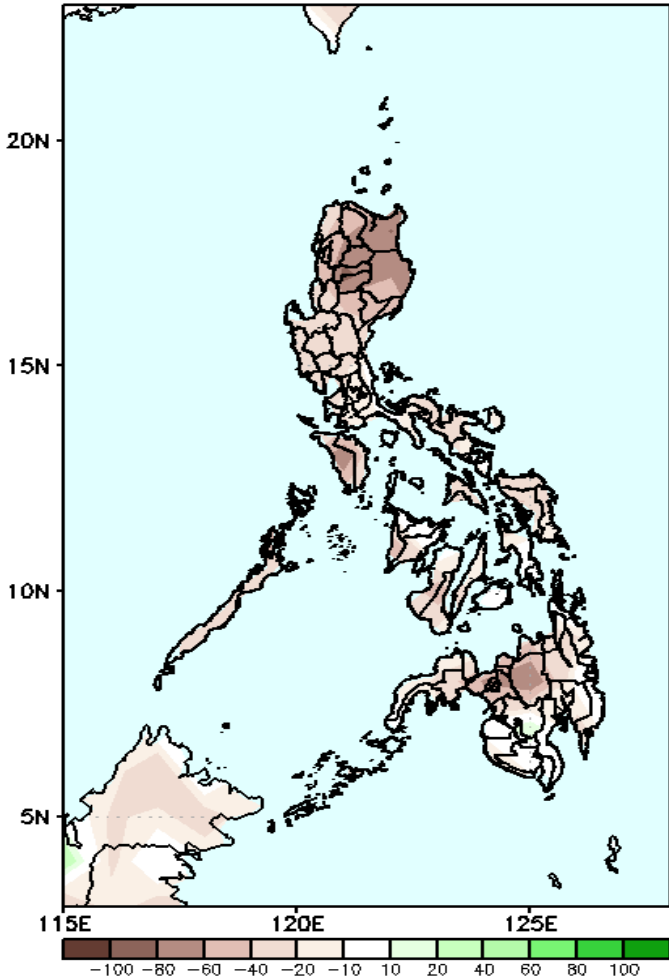
Upper level (200hPa) Divergence suggest likelihood of precipitation in southern Luzon and eastern Visayas. Easterlies affecting most parts of the country during the forecast period.



# Precipitation Anomaly and Exceedance Probability > 25/50 mm

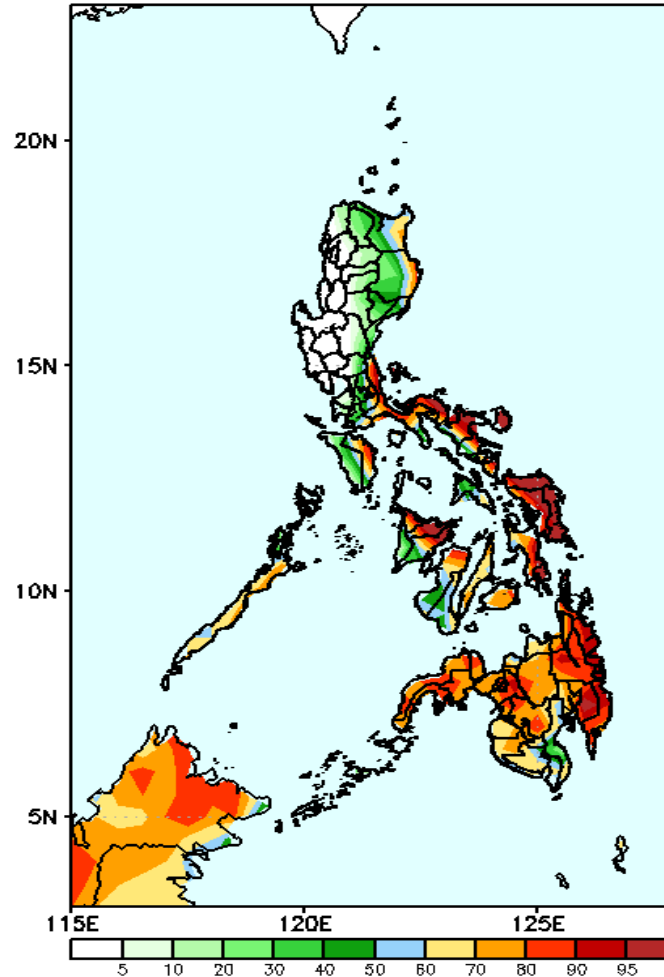
## Week 2: Nov 19-25, 2020

GEFS Week-2 Precip Anomaly  
Valid: 20201119 - 20201125



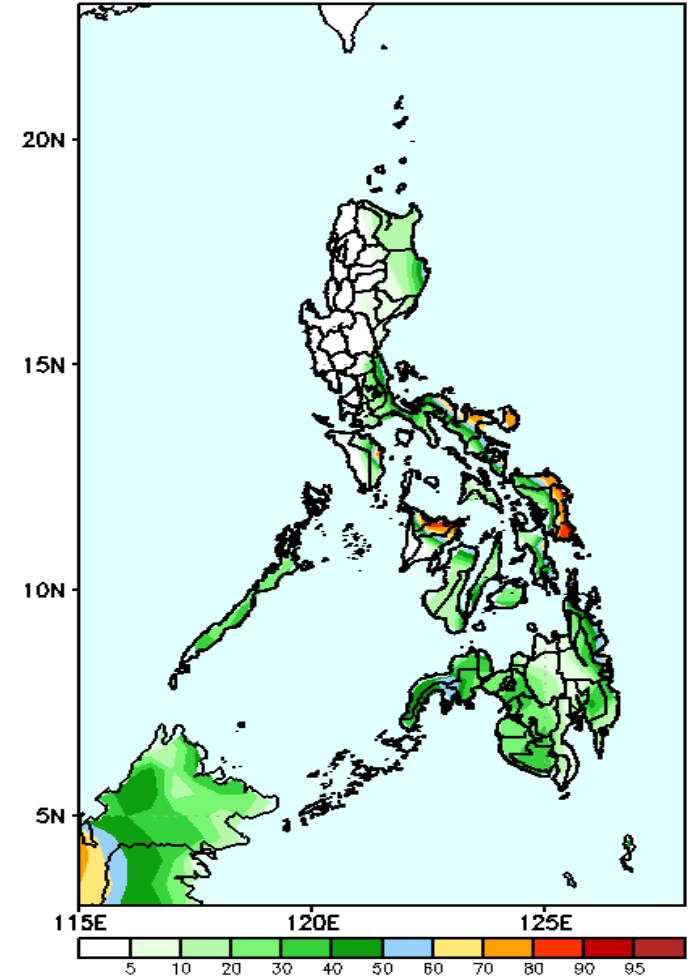
Rainfall deficit of up to 100mm in most parts of the country is expected during the forecast period.

GEFS Week-2 Exceedance Prob. > 25mm  
Valid: 20201119 - 20201125



High probability of rainfall to exceed 25mm in Cagayan, Isabela, Bicol Region and most parts of Visayas and Mindanao while less likely for the rest of Luzon and western Visayas.

GEFS Week-2 Exceedance Prob. > 50mm  
Valid: 20201119 - 20201125

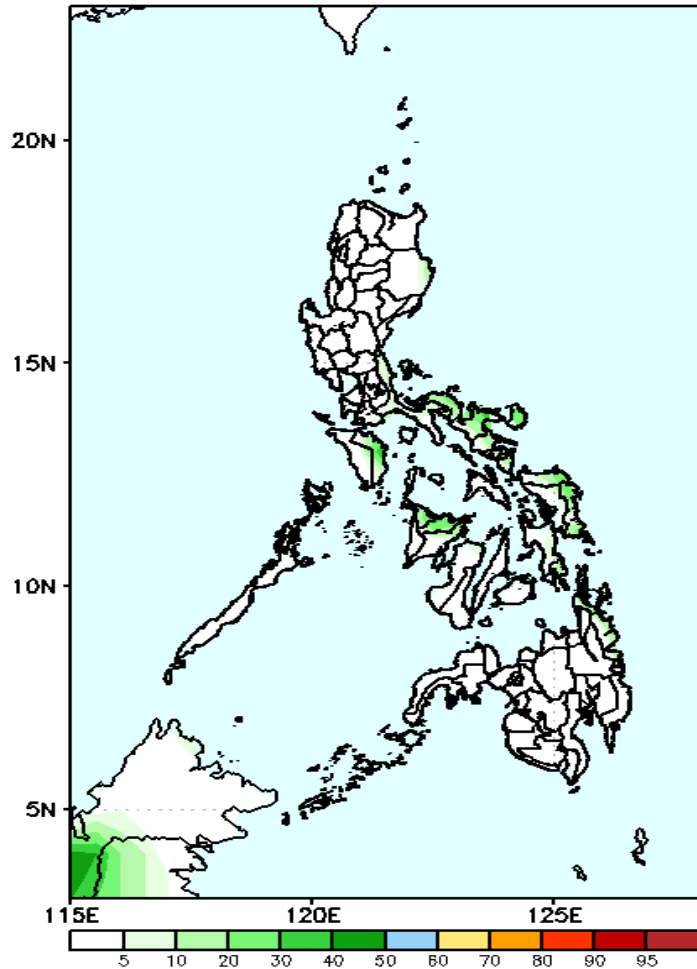


Less probability of rainfall to exceed 50mm in most parts of the country is expected except in Catanduanes, Camarines Sur, eastern Samar and Capiz where there is 70-95% probability during the forecast period.

# Exceedance Probability > 100/150/200 mm

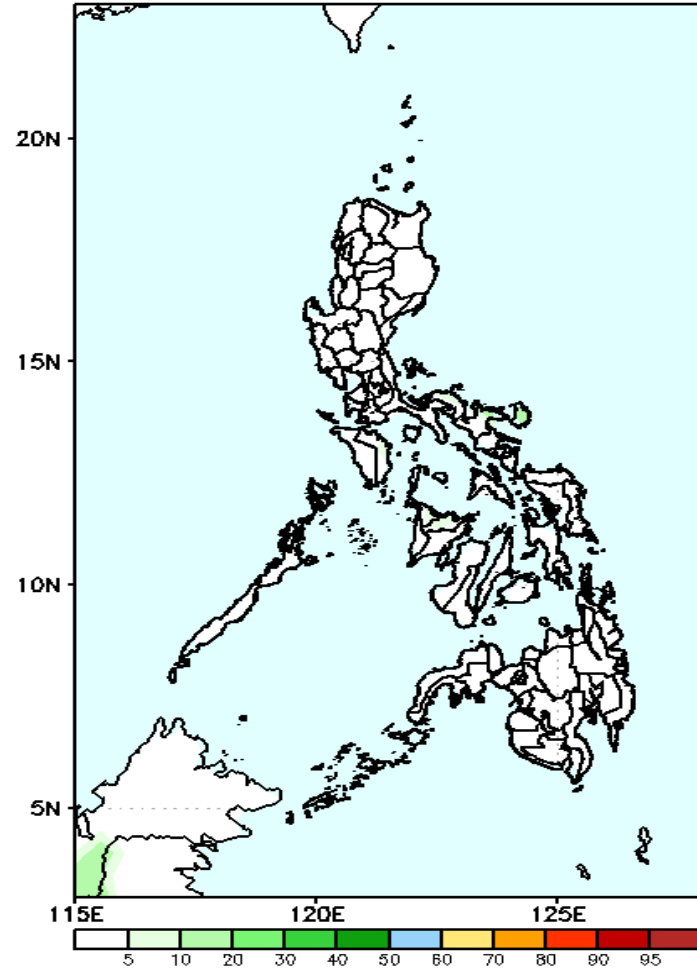
## Week 2: Nov 19-25, 2020

GEFS Week-2 Exceedance Prob. > 100mm  
Valid: 20201119 - 20201125



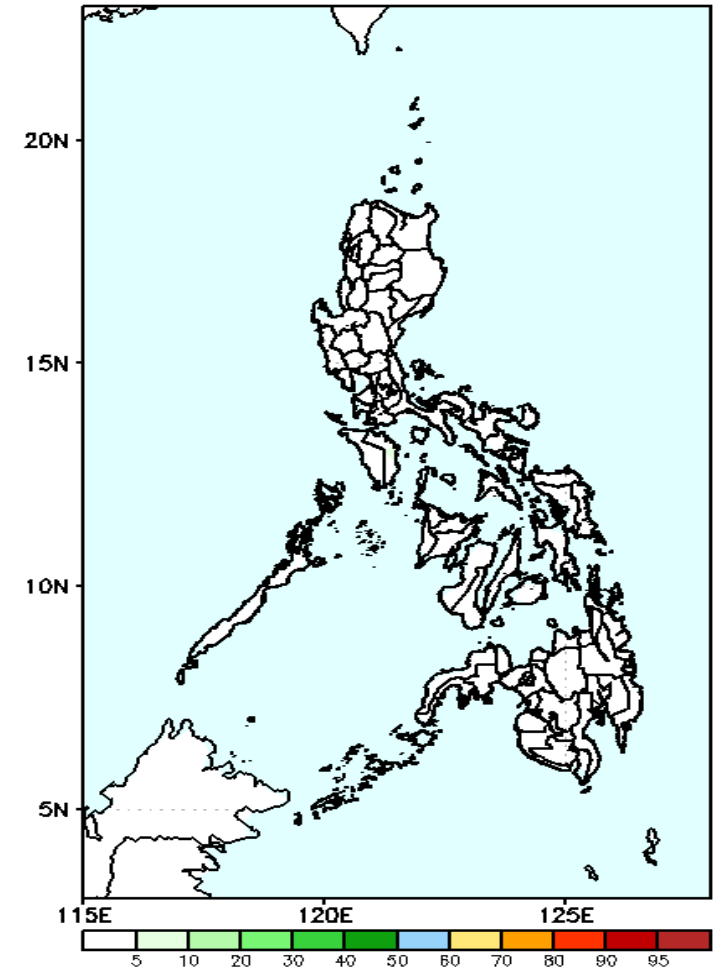
Less probability of rainfall to exceed 100mm in most parts of the country during the forecast period.

GEFS Week-2 Exceedance Prob. > 150mm  
Valid: 20201119 - 20201125



Less probability of rainfall to exceed 150mm in most parts of the country during the forecast period.

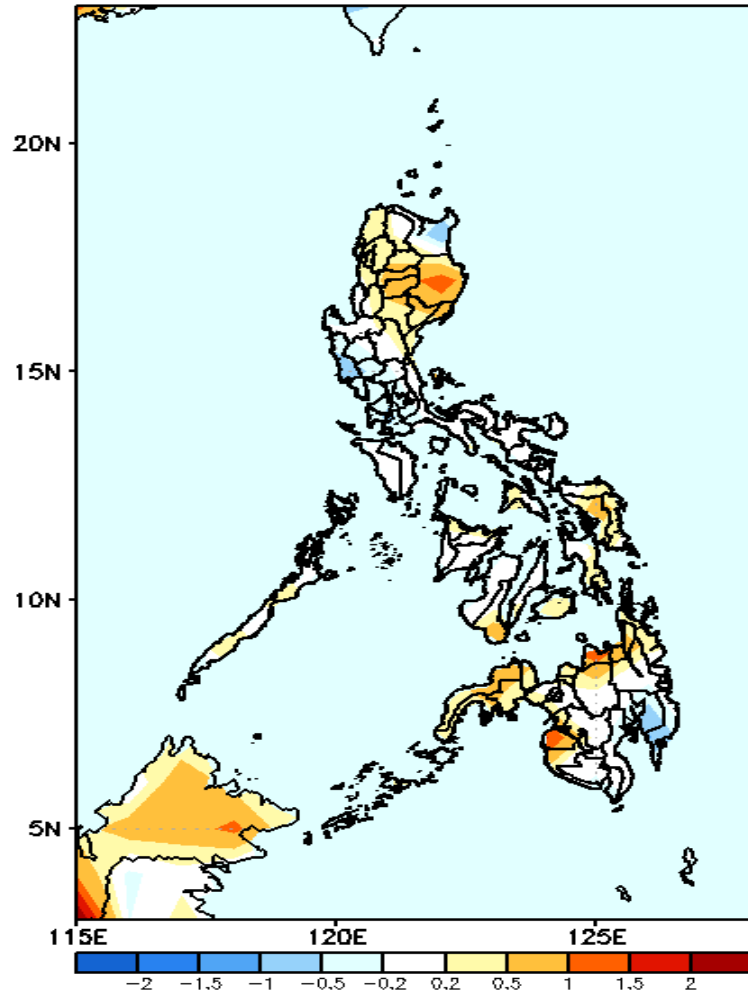
GEFS Week-2 Exceedance Prob. > 200mm  
Valid: 20201119 - 20201125



Less probability of rainfall to exceed 200mm in most parts of the country during the forecast period.

# GEFS Week-1 & 2 Forecasts: T2m Anomaly

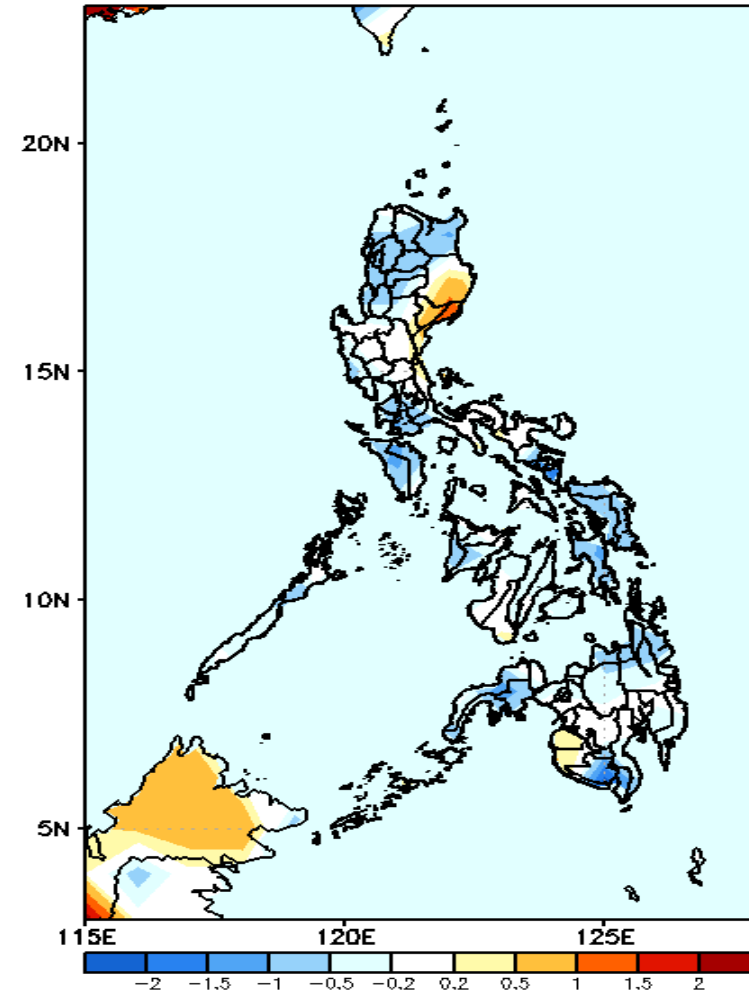
GEFS Week-1 T2m Anomaly  
Valid: 20201112 - 20201118



**2m Temperature Week 1: Nov 12-18, 2020**

Average to slightly warmer than average surface air temperatures is expected in most parts of the country except in Isabela, Misamis Oriental and Maguindanao where warmer temperature is more likely.

GEFS Week-2 T2m Anomaly  
Valid: 20201119 - 20201125



**2m Temperature Week 2: Nov 19-25, 2020**

Slightly cooler to cooler than average surface air temperature is expected in most parts of the country except in Isabela and Quirino where slightly warmer temperature is more likely.